



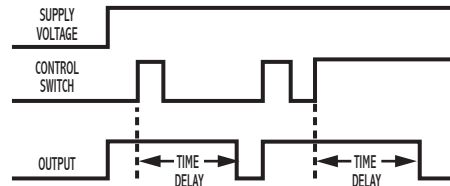
**Energy Conservation Timer  
Solid-State Output**

**SPECIFICATIONS**

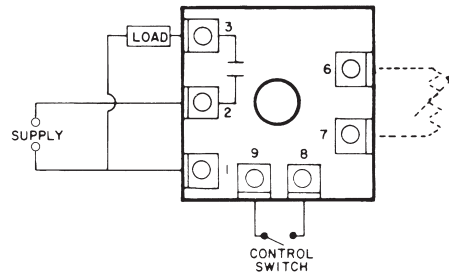
<b>TIMING RANGES</b>	Virtually unlimited See page 73 for standard ranges available.	
<b>OUTPUT RATING</b>	Solid-state, SPST-N.O. 1 amp resistive; 1 amp 25VA @ 24VAC 1 amp 125VA @ 120VAC .5 amp 125VA @ 240 VAC	
<b>TIMING TOLERANCES</b>	Minimum Setting	+0 – 20%
	Maximum Setting	±10%.
<b>REPEATABILITY</b>	1% maximum; no first cycle effect	
<b>RESET TIMES</b>	Before Time Out	100 mSEC
	After Time Out	50 mSEC
<b>RECYCLE TIME</b>	40 mSEC	
<b>SUPPLY VOLTAGE</b>	24, 120 or 240 VAC, 50/60 Hz; ±10%	
<b>FALSE TRANSFER</b>	No	
<b>REVERSE POLARITY</b>	Yes	
<b>ENCLOSURE</b>	Surface mounted; totally encapsulated with a high quality epoxy for environmental protection.	
<b>TEMPERATURE RATING</b>	Operate	32° to 131°F (0° to +55°C)
	Storage	-49° to 185°F (-45° to +85°C)
<b>TERMINATIONS</b>	1/4" quick disconnect terminals	
<b>WEIGHT</b>	NET: 1.28 oz Shipping: 1.6 oz.	

**OPERATION**

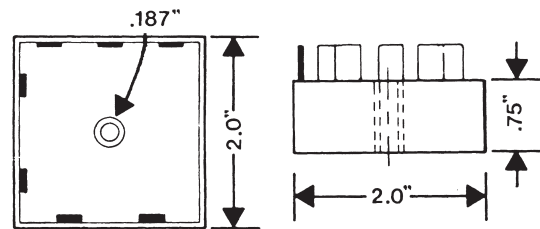
When voltage is applied to the input, the internal relay picks up and the time delay begins regardless of the position of the control switch. With the switch in the open position, when voltage is applied, the timer will complete its time delay period and the internal relay will drop out if the switch is not closed before the completion of the time delay period. With the switch in the closed position, when voltage is applied, the timer will complete its time delay period and the internal relay will drop out if the switch is not opened and reclosed before the completion of the time delay period. After voltage has been applied, closing of the control switch initiates the time delay period. Reset is accomplished by interrupting the supply voltage or re-closing the control switch.



**WIRING**



**DIMENSIONS (INCHES)**



**MODEL NUMBER**

<b>MODEL NUMBER</b>	TSM		A		C	
<b>SUPPLY VOLTAGE</b>	24 VAC	24				
	120 VAC	120				
	240 VAC	240				
<b>TYPE OF OPERATION</b>	Fixed			F		
	External Resistor Adjustable; See page 73 for resistor selection.			R		
<b>DELAY PERIOD</b>	See page 73 for standard ranges available					

Example: TSM-120-ARC-060—Energy conservation timer, 120 VAC, external resistor adjustable from 0.6 to 60 seconds, UL recognized.